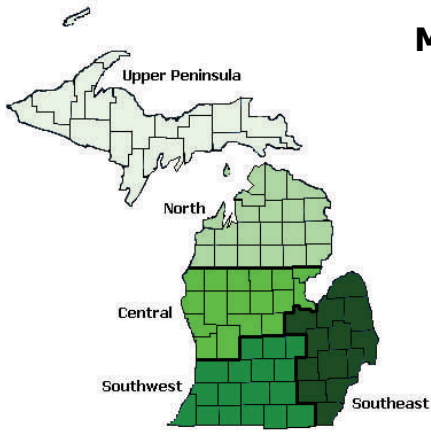


Michigan State University Extension



Michigan State University Extension (MSUE) helps people improve their lives through an educational process that applies knowledge to critical issues, needs and opportunities.

For more information

Contact:

**MSU Extension – Bay County
515 Center Avenue - Suite 301**

Bay City, MI 48708

Phone: 989-895-4026

E-mail: msue09@msu.edu

Web Site: msuextension.co.bay.mi.us

This profile is brought to you by the Michigan State University Extension and the Community Development Area of Expertise Team Helping build Michigan communities through interdisciplinary and customer-focused educational programming and processes.

Profile data sources: U.S. Census Bureau unless otherwise noted.

November 27, 2006

Michigan State University Extension programs and materials are open to all without regards to race, color, national origin, gender, religion, age, disability, political beliefs, sexual orientation, marital status or family status.

Michigan State University, U.S. Department of Agriculture and counties cooperating. Michigan State University is an affirmative-action, equal-opportunity institution.

MICHIGAN STATE
UNIVERSITY
EXTENSION

Bay County Profile



Brought to you by

**Michigan State University Extension
Community Development Area of Expertise Team**

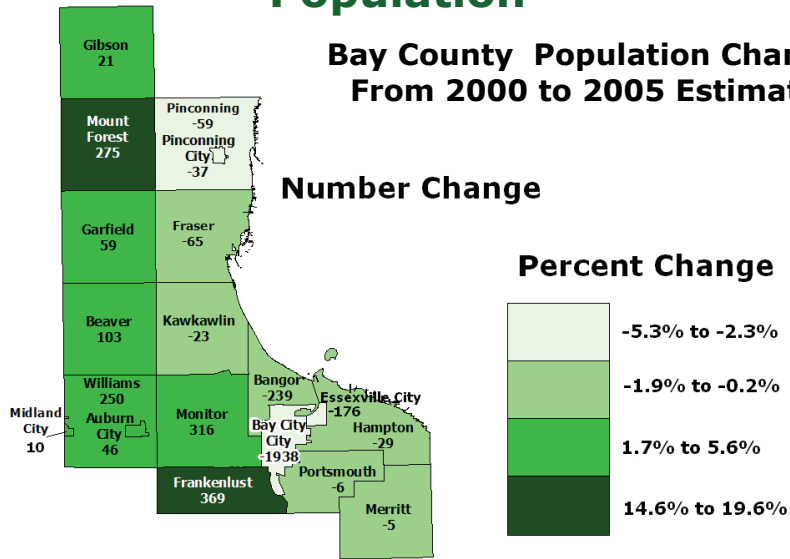
Quick facts

	<i>Bay County</i>	<i>Michigan</i>
Land area, 2000 (square miles)	444	56,804
Population, 2005 estimate	109,029	10,120,860
Housing units, 2004	47,617	4,433,482
Households, 2000	43,930	3,785,661
Median household income, 2003	\$39,151	\$46,291
Retail sales, 2002 (\$1000)	1,280,626	109,350,139
Median age, 2000	38.4	35.5

MICHIGAN STATE
UNIVERSITY
EXTENSION

Population

Bay County Population Change From 2000 to 2005 Estimate



Minor Civil Divisions & County Population	1990	2000	2005 Estimate
Bay County	111,723	110,157	109,029
Williams township	4,278	4,492	4,742
Portsmouth township	3,918	3,619	3,613
Pinconning township	2,647	2,608	2,549
Pinconning city	1,291	1,386	1,349
Mount Forest township	1,457	1,405	1,680
Monitor township	9,512	10,037	10,353
Midland city	234	222	232
Merritt township	1,510	1,510	1,505
Kawkawlin township	4,852	5,104	5,081
Hampton township	9,520	9,902	9,873
Gibson township	1,090	1,245	1,266
Garfield township	1,736	1,775	1,834
Fraser township	3,680	3,375	3,310
Frankenlust township	2,281	2,530	2,899

This chart displays the minor civil divisions with the largest increase in population by number of people from 2000 to 2005. For more information go to http://www.michigan.gov/documents/hal_lm_census_sc2005-mcd_163284_7.xls.

Poverty

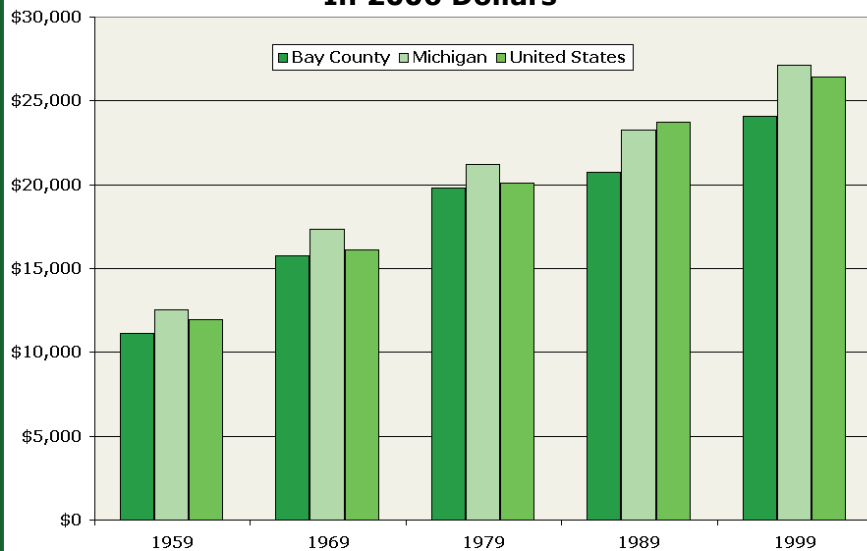
Poverty Rates Comparison	1989			1999		
	Bay County	Michigan	United States	Bay County	Michigan	United States
All Families	10.2	10.2	10.0	6.7	7.4	9.2
With related children under 18 years	16.6	16.0	14.9	10.9	11.3	13.6
With related children under 5 years	21.1	20.6	18.3	13.9	14.7	17.0
Families with female householder, no husband present	40.5	35.8	31.1	22.5	24.0	26.5
With related children under 18 years	54.2	48.1	42.3	30.4	31.5	34.3
With related children under 5 years	71.9	64.6	57.4	46.0	44.2	46.4
All Individuals	12.5	13.1	13.1	9.7	10.5	12.4
18 years and over	10.7	11.1	11.3	8.8	9.3	10.9
65 years and over	10.7	10.8	12.8	9.1	8.2	9.9
Related children under 18 years	17.2	18.2	17.9	12.2	13.4	16.1
Related children 5 to 17 years	15.8	16.7	17.0	11.5	12.7	15.4

In 1989 the poverty threshold for a household of four with two related children under 18 years was \$12,575. In 1999 the threshold for the same type of family was \$16,895.

Income

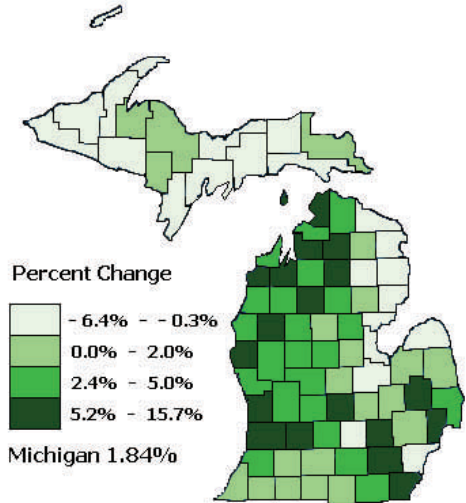
Household Income	Bay County		Michigan	
	1989	1999	1989	1999
Less than \$10,000	18.2%	9.4%	15.6%	8.3%
\$10,000 to \$14,999	10.2%	7.0%	8.6%	5.8%
\$15,000 to \$24,999	17.2%	14.6%	16.4%	12.4%
\$25,000 to \$34,999	15.3%	14.4%	15.3%	12.4%
\$35,000 to \$49,999	19.1%	16.3%	18.7%	16.5%
\$50,000 to \$74,999	14.0%	19.5%	16.3%	20.6%
\$75,000 to \$99,999	4.0%	10.2%	5.4%	11.4%
\$100,000 to \$149,999	1.4%	6.5%	2.5%	8.6%
\$150,000 or more	0.6%	2.1%	1.2%	4.1%
Total Households	42,103	44,026	3,424,122	3,788,780
Median Household Income	\$27,940	\$38,646	\$31,020	\$44,667

Per Capita Income Comparison In 2006 Dollars



Source: The 1959, 1969, and 1979 values were brought to 1989 levels by the U.S. Census Bureau. Oct. 5, 2006 levels were calculated using the CGI calculator at <http://data.bls.gov/cgi-bin/cpicalc.pl>.

Michigan Population Change from 2000 to 2005 Estimate



Bay County ranks 70 out of 83 in the state for population change from 2000 to 2005 estimate.

Education

Educational Attainment for Persons Age 25 and Over

	Less than 9th grade	9th to 12th grade, no diploma	High school graduate	Some college, no degree	Associate degree	Bachelor's degree	Graduate or professional degree
1990 Bay County	10.8%	15.2%	35.6%	20.1%	7.2%	7.4%	3.7%
1990 Michigan	7.8%	15.5%	32.3%	20.4%	6.7%	10.9%	6.4%
1990 U.S.	10.4%	14.4%	30.0%	18.7%	6.2%	13.1%	7.2%
2000 Bay County	6.1%	11.5%	37.0%	23.3%	8.0%	9.7%	4.4%
2000 Michigan	4.7%	11.9%	31.3%	23.3%	7.0%	13.7%	8.1%
2000 U.S.	7.5%	12.1%	28.6%	21.0%	6.3%	15.5%	8.9%

For the 2001–2002 school year, in Bay County there were 229 high school dropouts or 4.5% and in Michigan there were 17,167 dropouts or 3.7%.

Source: Michigan Family Independence Agency

Population Composition

Bay County			
Age Range	1990	2000	2005 Est
00-04	7,965	6,725	6,258
05-09	8,093	7,544	6,644
10-14	8,433	7,886	7,474
15-19	8,104	7,713	7,331
20-24	7,477	6,232	7,045
25-29	8,394	6,371	6,395
30-34	9,396	7,142	6,136
35-39	8,862	8,302	6,906
40-44	7,991	9,239	8,311
45-49	6,610	8,494	8,904
50-54	5,526	7,558	8,289
55-59	4,841	5,933	7,289
60-64	5,051	4,848	5,539
65-69	4,766	4,068	4,370
70-74	4,079	3,980	3,308
75-79	3,009	3,536	3,348
80-84	1,842	2,488	2,814
85+	1,284	2,098	2,668
County Total	111,723	110,157	109,029

In the 2005 estimate, Bay County's population included 53,122 males and 55,907 females, or 48.7% and 51.3% respectively. For Michigan, males represent 49.2% and females 50.8%.

Median Ages

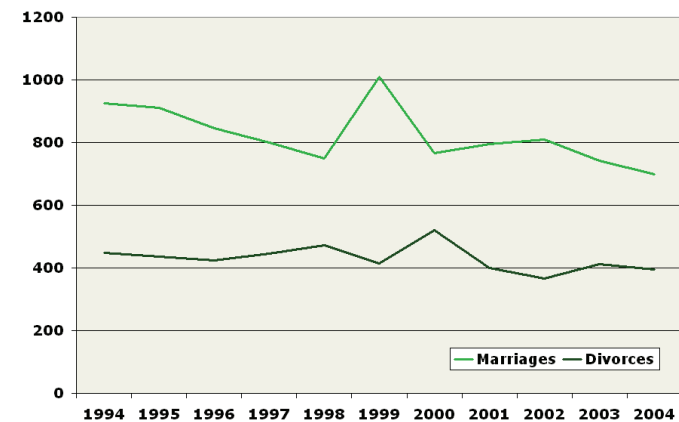
	1980	1990	2000
Bay County	28.7	33.9	38.4
Michigan	28.8	32.6	35.5
U. S.	30.0	33.0	35.3

Households & Families

In 2000, Bay County had

- 43,930 households and 30,039 families.
- 1,447 grandparents living in a household with one or more of their own grandchildren under 18 years and of these 562 grandparents were responsible for their grandchildren.
- 4,803 female householders with no husband present, and 2,884 of these households included children under 18 years.
- 4,981 householders 65 years and older.
- 6,283 children under age 18 living with a single parent. This represented 23.3 percent of all children in Bay County. In Michigan, 24.5 percent of all children lived in single parent families.

Marriage and Divorce History in Bay County

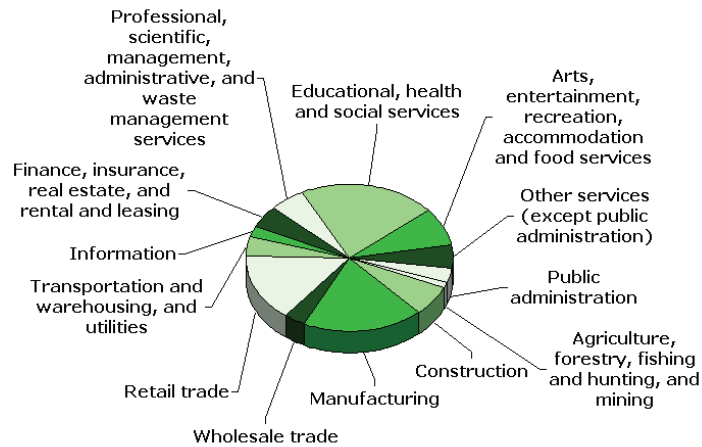


In 2004, there were 36,779 Michigan children involved in divorces and annulments.

Source: Michigan Department of Community Health

Employment

2000 Employment by Industry in Bay County



Regional Employment Forecast for Bay, Midland, and Saginaw Counties

	# of Employees		Growth Rate
	2002	Forecast 2012	
Total, Wage & Salary Employment	176,480	191,370	8.4%
Administrative & Support Services	9,070	12,600	38.9%
Food Services & Drinking Places	13,510	14,810	9.6%
Educational Services	16,460	17,750	7.8%
Ambulatory Health Care Services	6,820	8,070	18.3%
Nursing & Residential Care Facilities	3,670	4,530	23.6%
Hospitals	10,230	11,020	7.7%
Membership Associations & Organizations	4,660	5,330	14.5%
Professional, Scientific, & Tech Services	6,120	6,760	10.5%

This chart displays the total for the region and some of the highest forecast growth industries by number of employees. For more information go to www.milmi.org, click on Industry Information, and select Saginaw MSA.

Bay County Population Composition

Population by Race and Hispanic or Latino Origin	1990	2000	2004 Est
White	107,747	106,238	105,490
Black	1,242	1,442	1,489
American Indian/Alaskan Native	726	632	623
Asian or Pacific Islander	428	556	548
Two or More Races	1,580	1,289	1,330
Total	111,723	110,157	109,480
Hispanic or Latino (of any race)	3,494	4,308	4,475

Of the 43,930 households in 2000, there were 2,311 unmarried partner households, of which

- 59 were male householder and male partner
- 1,163 were male householder and female partner
- 70 were female householder and female partner
- 1,019 were female householder and male partner

Urban and Rural Population	Year 2000
Total:	110,157
Urban:	78,047
- Inside urbanized areas	74,183
- Inside urban clusters	3,864
Rural:	32,110
- Farm	1,661
- Non-farm	30,449

Disability *	Year 2000
Total population 5 to 20 years	24,248
- With a disability	1,883
Total population 21 to 64 years	62,734
- With a disability	11,578
- Percent employed	51.5%
- No disability	51,156
- Percent employed	77.4%
Total population 65 years and over	15,554
- With a disability	6,740

* Civilian non-institutionalized population only

Labor Force

Where Bay County Residents Work

Bay County residents who worked in their own county:

	1980	1990	2000
Number	30,506	31,442	32,281
Percent	72.3%	66.7%	64.4%

Bay County residents who worked outside their county of residence, but in Michigan:

	1980	1990	2000
Number	11,637	15,557	17,691
Percent	27.6%	33.0%	35.3%

Bay County residents who worked outside Michigan:

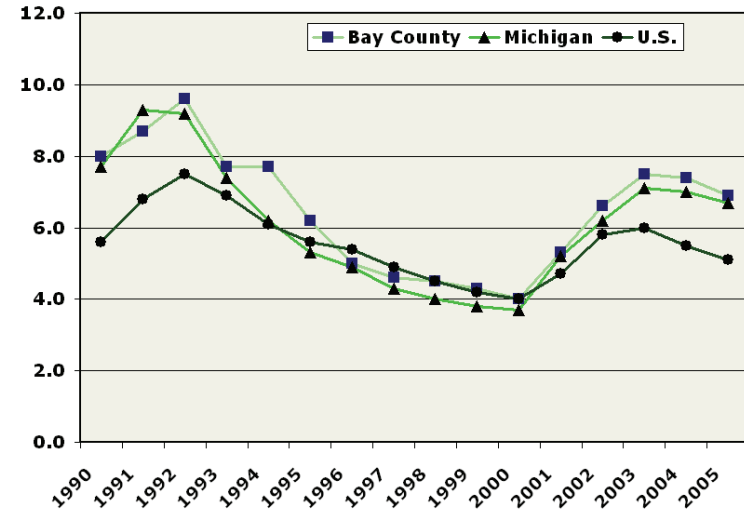
	1980	1990	2000
Number	46	139	134
Percent	0.1%	0.3%	0.3%

Analysis of Bay County Women 16 Years and Older In the Labor Force in 2000

	Employed	Unemployed	Not in Labor Force
Women with children of their own, all under 6 years of age.	68.8%	4.4%	26.8%
Women with children of their own under 6 years of age and children of their own between 6 and 17 years.	63.4%	4.6%	32.0%
Women with children of their own between 6 to 17 years only.	76.4%	2.9%	20.8%
Women with no children under 18 years of age.	46.0%	2.9%	51.1%

Unemployment

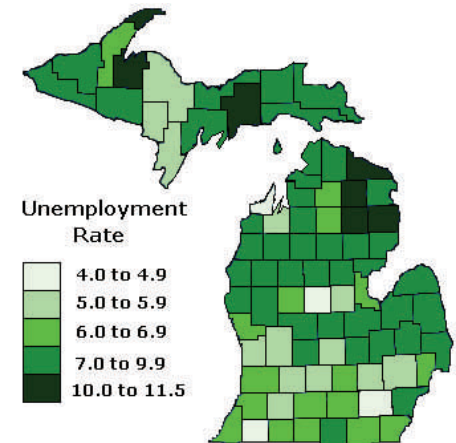
Unemployment Rates 1990 to 2005



Bay County Unemployed

Year	%	Count
1997	4.6%	2,531
1998	4.5%	2,491
1999	4.3%	2,408
2000	4.0%	2,286
2001	5.3%	2,967
2002	6.6%	3,643
2003	7.5%	4,197
2004	7.4%	4,203
2005	6.9%	3,868

Unemployment Rates by County not seasonally adjusted Michigan Annual 2005



Source: All data on this page is from the Bureau of Labor Statistics.