

BAY COUNTY HEALTH DEPARTMENT

“Creating A Healthy Environment For The Community”

2007 Annual Report



The core functions of Public Health are: Assessment, Policy Development and Assurance. The Bay County Health Department, as part of its mission to protect and improve the general health of people in the community, must evaluate the current level of health and threats to health in the community (assessment). This report highlights public health services indicators for the year 2007. If there is a particular area of interest that is not listed in this report, please feel free to contact our office.

Public Health Services

Health Promotion
Health Protection
Disease Prevention

1200 Washington Avenue
Bay City, Michigan 48708
Ph: (989) 895-4003
Fax: (989) 895-4014

Website: www.baycounty-mi.gov/Health

Developed by Dominic Smith
Community Health Educator



BAY COUNTY MISSION STATEMENT

Bay County will provide efficient, customer and taxpayer-focused, public services that improve the quality of life for Bay County residents.

BAY COUNTY VISION STATEMENT

The vision of Bay County Government is to provide a continuously improving quality of life in our community through leadership and services.

BAY COUNTY HEALTH DEPARTMENT MISSION STATEMENT

The mission of the Bay County Health Department is to improve the community's quality of life by the promotion of optimum health through the prevention and control of disease.

GOALS

The goal of public health administration is to establish and maintain a community focus on public health through the development of an efficiently organized, adequately staffed and effective Health Department.

The Health Department was created to meet the needs and the expectations of all citizens in Bay County. Many of the services are free of charge while others are based on income, eligibility criteria, and fee for service.

No participant requesting assistance from the Bay County Health Department, will be excluded from participation, denied the benefits of, or be otherwise subject to discrimination under these programs, on the basis of race, creed, age, color, national origin or ancestry, religion, sex, marital status or disability.



Tom Hickner
County Executive



Patrick Beson
Human Services Chairperson
Board of Commissioners

"The County Executive has influence over all county departments except those headed by other elected officials. It is our mission to provide efficient, customer and taxpayer-focused public services that improve the quality of life for our residents. As you can see from this Annual Report, the Bay County Health Department has succeeded in responding to that challenge." – Tom Hickner

To the Citizens of Bay County:

"On behalf of the Bay County Board of Commissioners I am happy to comment briefly on the 2007 Bay County Health Department Annual Report."

"The Bay County Board of Commissioners is extremely proud of the programs provided by the Bay County Health Department and the staff who carry out these programs with efficiency, commitment, dedication and respect. With dwindling financial assistance and resources, the Health Department continues to effectively serve this community without jeopardizing the health and safety of its populace. This is both commendable and praiseworthy. The 2007 annual report reflects the success achieved through their efforts." – Pat Beson



Public Health
Prevent. Promote. Protect.

TABLE OF CONTENTS



A Message From The Health Officer	4
Environmental Health Division.....	5
Food Service	5
Private/Public Water	5
Private/Semi-Public On-Site Sewage	6
Highlights At A Glance	6
ServSafe Food Service Sanitation Program	7
Immunization Division.....	7
Immunization Highlights	7
Family Planning	8
Laboratory	8
WIC	9
Hearing & Vision	9
Health Screening	9
Emergency Preparedness & Management	10
Community Outreach	11
Bay Health Plan	11
Michigan Disease Surveillance System (MDSS).....	12
Children Special Health Care Services	13
Early & Periodic Screening Diagnostic and Treatment / Lead	13
Maternal Infant Health Program (MIHP)	14
Successful Futures	14
Medical Examiner.....	15
Division on Aging (DOA)	16
Meal Services	16
Support Services – Hours.....	16
Fiscal Year 2006-2007 Expenses.....	17
Sources of Income.....	17
Bay County Health Department Expenditures	18
Bay County Health Department Revenues	19

A Message from the Bay County Health Department Health Office

Barbara MacGregor, RN, BSN



To the Bay County Executive, Board of Commissioners, and Citizens of Bay County:

I am pleased to present you with the 2007 Bay County Department of Community Health Annual Report. This report highlights the many services and programs that help Bay County citizens lead healthier and safer lives.

PUBLIC HEALTH helps communities to be healthy places to live, work and play. The Bay County Department of Community Health is *your* public health agency, protecting and improving the general health of Bay County residents by ensuring the core functions of public health—assessment, policy development, and assurance, are carried out.

Food safety inspections, immunizations, communicable disease prevention and investigation, emergency preparedness, beach monitoring, women and children's health services and linking individuals and families to information and health care are only a sampling of the many vital programs your health department offers. In addition, your health department collaborated with several partner agencies in the community to provide flu clinics, emergency preparedness drills, lead screenings, removal of household hazardous waste from the environment, and investigation of communicable disease outbreaks.

I hope you will take a moment to review our Annual Report, as it highlights the many accomplishments and services provided by our dedicated staff. We thank our County Executive and Board of Commissioners for their leadership and support, and look forward to continuing to work with all of our community partners in innovative ways so all residents can lead healthier and safer lives.

Yours in good health,

A handwritten signature in black ink that reads "Barbara M. MacGregor". The signature is written in a cursive style.

Barbara M. MacGregor
Health Officer

Profile of Bay County, 2006

Population: 108,390

Male: 51,890

Female: 56,500

Median Age: 40.4

Under 5 Years: 6,219

18 Years and Over: 83,883

65 Years and Over: 16,513

Race:

White: 102,082

Black: 2,379

Native American: 277

Asian: 213

Hispanic: 4,434

Other: 3,439

Births: 1,251

Deaths: 1,134

Infant: 12

Leading Causes of Death:

Heart Disease: 383

Cancer: 266

Stroke: 54

Chronic Lower Respiratory Disease: 68

Unintentional Injuries: 26

Influenza / Pneumonia: 39

Diabetes Mellitus: 22

Alzheimer's Disease: 33

Kidney Disease: 24

Accidents: 22 (2007 Data)

Suicides: 7 (2007 Data)

Homicides: 3 (2007 Data)



ENVIRONMENTAL HEALTH DIVISION

The Environmental Division of the Bay County Health Department (BCHD) protects the public health through programs established by the Public Health Code and local Sanitary Ordinances. These programs focus on the prevention of disease and exposure to pollutants via education, inspection of facilities and enforcement of the referenced laws. Most of the prevention and abatement of environmental threats are accomplished through education of the clients and the general population.

The Environmental Health Division of the Health Department consists of six professional environmental health staff. There are five Sanitarians and one Secretary. The Sanitarians are registered by the State of Michigan to provide the services of the Division.

FOOD SERVICE

Food establishments and vending locations, which dispense foods and drinks to the public, are routinely inspected by the Health Department. Sanitarians consult with food service operators and food service personnel on the safe handling and preparation of food. Education of the food service operator on the proper methods of safe food handling is a vital function of the Division. Sanitarians review and approve proposed new and remodeled food service facilities and approve food service licenses. Sanitarians also investigate instances of possible food poisoning in conjunction with the Michigan Department of Agriculture.

Food Service Inspections and Actions

<u>PROGRAM</u>	<u>2005</u>	<u>2006</u>	<u>2007</u>
Fixed Food Establishment Inspections	668	554	631
Mobile, Vending & STFU, Temporary Food Establishment Inspections	37	191	146
Follow-up Inspections	62	56	94
Number of Plans Received for Review	29	7	6
Number of Plans Approved	29	9	9
Consumer Complaints Investigated	48	23	35
Foodborne Illness Complaints Investigated	1	14	12
Foodborne Illness Outbreaks	0	0	0
Administrative Action (office conference, informal conference, formal hearing, civil fines, orders)	3	3	9

PRIVATE/PUBLIC WATER

Well permits are issued for homes and businesses which are not served by municipal water systems. The Division conducts field evaluations, reviews construction plans, and consults with homeowners and well drillers on proper well installations. Sanitarians issue permits for construction of new and replacement wells and assists persons who have concerns or problems with water quality.

Private & Type III Public Ground Water Supply Program

<u>PROGRAM</u>	<u>2005</u>	<u>2006</u>	<u>2007</u>
Number of Well Permits Issued	88	72	79
Number of Pre Drilling Site Reviews Completed	88	90	71
Number of Final Inspections of Newly Completed Water Well Systems	55	36	58
Number of Abandoned Wells Plugged	23	23	19
Number of Facility Swimming Pools/Spas Inspections Completes	48	48	46

PRIVATE/SEMI-PUBLIC ON-SITE SEWAGE

On-site sewage disposal permits are issued for homes and businesses which are not served by municipal sewer systems. Sanitarians conduct field evaluations to determine the suitability of conditions for on-site disposal of sewage. The Division reviews construction plans, consults with owners and engineers on proper design and construction of on-site systems. The Division issues permits for the construction of new and replacement sewage system and conducts final inspections to assure that systems are installed according to required rules and regulations.

On-Site Sewage Disposal Program

<u>PROGRAMS</u>	<u>2005</u>	<u>2006</u>	<u>2007</u>
Number of Parcels Evaluated	270	208	286
Number of On-Site Sewage Permits Issued	183	117	124
Number of Alternative/Engineered Systems Approved	3	6	18
Number of Complaints Investigated	23	17	19

HIGHLIGHTS AT A GLANCE

The Environmental Health Division had a big year with its **Household Hazardous Waste Collection Program**.

There were two collection events held in June and October. The Household Hazardous Waste Collection Program gives Bay County residents a legal and cost-free way to dispose of unwanted household chemicals that cannot be disposed of in the regular trash. The program is sponsored by the Dow Chemical Foundation and Bay County Health Department.



A variety of items are accepted during collection, such as automotive products, cleaning products, garden and lawn products, paint products, personal and health care products

In 2007, the Bay County Board of Commissioners adopted a Phosphorus Ban Ordinance. This ordinance requires that no phosphorus fertilizers be used on residential properties when soil levels for lawns are adequate.

Enforcement of the ordinance begins in January 2009 following a year-long public education campaign in 2008.

During Summer 2007, the Environmental Health Division conducted its annual Bathing Beach Surface Water Quality Program. Eight weekly samples were collected at eight sampling stations located on the Saginaw, Kawkawlin and Saginaw/Bay rivers. Four of these stations were sampled three times per week. Overall, the results of the water samples indicated compliance with the State of Michigan surface water quality standard for total body contact.

Items & Quantities Collected for Household Hazardous Waste

<u>Items</u>	<u>June</u>	<u>October</u>
Herbicides/Preservatives	32 lbs.	-0-
Reactives	161 lbs.	20 lbs.
Flammable Liquids	3,680 lbs.	1,280 lbs.
Empty Containers	3 lbs.	1 lb.
Corrosives	827 lbs.	136 lbs.
Asbestos	338 lbs.	13 lbs.
Pesticide Liquids	1,095 lbs.	526 lbs.
Pesticide Solids	550 lbs.	284 lbs.
Paint Cans	1,889 lbs.	385 lbs.
Aerosols	330 lbs.	179 lbs.
Mercury	13 lbs.	15 lbs.
Bulked Solvents & Oil Based Paints	1,689 lbs.	399 lbs.

The Bay County Health Department is expected to continue and receive funding for the Household Hazardous Waste Collection Program in year 2008.

SERVSAFE FOOD SERVICE SANITATION PROGRAM

This course is offered through the Bay County Health Department and taught by Registered Sanitarians Daniel Dicks and Barry Hugo. The ServSafe Food Service Sanitation Program is a 16-hour ServSafe Essential course offered to all persons in the Food Service Industry. The course provides training in basic sanitation principles: Food Microbiology, Prevention of Food-borne Illness, Safe Food Handling, Personal Hygiene, Construction and Maintenance of Food Service Facilities, Pest Control, and HACCP Principles.

ServSafe Data

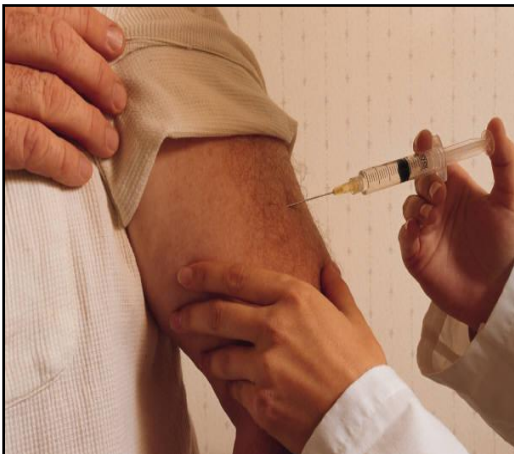
<u>COURSE DATE</u>	<u>NUMBER OF PARTICIPANTS</u>	<u>NUMBER OF PARTICIPANTS WHO TOOK SERVSAFE EXAM</u>	<u>NUMBER OF PARTICIPANTS THAT PASSED SERVSAFE EXAM</u>
February – March	4	4	4
April	8	8	7
May	4	4	4
December	4	4	4

IMMUNIZATION DIVISION

<u>VACCINATION TYPE</u>	<u>DOSES ADMINISTERED IN 2006</u>	<u>DOSES ADMINISTERED IN 2007</u>
DTap	473	219
Td Adult Only	250	73
Tdap	463	361
HHib-Pedvax	264	280
Meningococcal Conjugate	400	418
Hib Hep B	51	9
Hep B (Pediatric)	162	89
Hep B (Adult)	263	206
IPV Dose	442	171
MMR	340	179
Varicella	231	281
Pneumococcal Conjugate	125	399
Hep A (Pediatric)	107	148
Hep A (Adult)	40	41
DTaP-Hep B-IPV	228	227
Influenza	1026	784
Rotavirus	30	141
TB Testing	680	685
Zostavax	0	141
TOTAL	5575	4852

The Immunization Division provides immunizations to individuals in the community with an emphasis on the pediatric population. The Immunization Division provides:

- * Daily clinics with evening hours twice a month.
- * Seasonal immunizations; flu, pneumococcal, and meningococcal for college students
- * Distribution of vaccine to area providers enrolled in the Vaccine For Children Program (VFC)
- * Annual site visits to VFC providers to assure vaccine safety and contract compliance
- * Michigan Care Improvement Registry (MCIR): Area providers are assisted with entry of vaccines into the MCIR to assure accuracy of immunization records
- * Oversight and monitoring of immunization levels for children and entry of vaccines into the MCIR to assure accuracy of immunization records
- * Participation in the Immunization Task Force to bring together key individuals in the community that have a vested interest in assuring children's vaccinations
- * Provider education: A Public Health Nurse provides in-services to area providers to help assure staff is knowledgeable and up-to-date on vaccine information.
- * Payment is derived from insurance sources, and accommodations are made for the uninsured, including a sliding fee scale to match resources of individual persons.



IMMUNIZATION HIGHLIGHTS

The Immunization Division nurses and clerks participated in Delta College's Health & Wellness Fair by providing HPV, Hepatitis B, and Meningitis vaccines to students, faculty, and community members. The Incident Command Trailer was utilized as mobile vaccination clinic. The Emergency Preparedness & Management Division staff used this opportunity to test through-put of patients and the effectiveness of the Incident Command Trailer to be used for this purpose.

FAMILY PLANNING

The Family Planning Clinic serves men and women of childbearing ages for reproductive health needs. Clients may utilize the clinic for the following types of services: pregnancy testing and referral, sexually transmitted disease testing and treatment and contraceptive needs. Women desiring a physical exam may obtain a breast exam, pelvic exam, pap smear, and appropriate lab work. All methods of birth control are available, as well as abstinence information and pre-conception education. Fees for service are based on a sliding scale according to the client's income and family size. All services are rendered in a confidential and caring manner.

Family Planning Data

<u>CLIENTALE</u>	<u>2005</u>	<u>2006</u>	<u>2007</u>
Number of Unduplicated Persons Receiving Services in Family Planning Clinic	1108	1404	1392
Number of Encounters in Family Planning Clinic	3667	3574	3255
Females Served	1108	1404	1379
Males Served	N/A	N/A	13



Sue Monte, Nurse Practitioner, Eunice Wilson, Division Clerk, Kathy Trepkowski, Nurse



LABORATORY

The Laboratory Services Division provides a variety of diagnostic and analytical services to support public health initiatives related to the citizens of Bay County. The Laboratory is licensed by the Michigan Department of Environmental Quality (MDEQ) for water testing, and licensed for clinical analysis by Clinical Laboratory Improvement Amendment (CLIA).

Laboratory Data

<u>CLIENTALE</u>	<u>2005</u>	<u>2006</u>	<u>2007</u>
Number of Clients	4621	4599	3804
Number of Tests	7622	7652	7107



WOMEN'S, INFANTS AND CHILDREN'S (WIC) PROGRAM

WIC is a federally funded program to prevent malnutrition in high-risk pregnant, breast-feeding, and non-lactating women, infants and children until age 5. The income eligibility is at or below 185% of the federal poverty level, with verification of income required. The medical and nutritional risk factors are determined by a Registered Nurse, Registered Dietician, or Nutritionist, and support staff is trained to screen for nutrition-related health problems. WIC coupons purchase over \$1,500,000.00 in food in local grocery stores in the Bay County area. Health Department clients receive WIC services along with other needed services, such as Immunizations, Maternal and Infant Support Services, and voter registration. Families are provided a user-friendly "one stop shopping service". WIC clients are also linked to the Bay County local Farmer's Market through Project Fresh. This is a collaborative program with MSU Extension and Bay County Health Department. WIC families are introduced to the local market and participate in Nutrition Education class, which teach how to prepare meals using local produce.

WIC Data

<u>PROGRAM</u>	<u>2006 May - December</u>	<u>2007</u>
New Enrollees	835	1087
Recertification	2068	3268
Reinstate	392	661
Infant Evaluation	366	620
High Risk Registered Dietician Assessment	351	387
Nutrition Education	478	538
Bulletin Board (Test/Survey)	441	910
Internet Education	510	753
Lead Eligible Assessment	661	1308
Lead Check Completed	126	278
Lead Check Provided by Physician	415	936
Lead Check Refused	71 (Aug.-Dec.)	84

HEARING & VISION PROGRAM

The Hearing & Vision Program provides screening by certified technicians in all Bay County schools, Day Cares, and Head Start/Preschools. *Hearing & Vision data is based on school year.*

<u>CLIENTALE</u>	<u>2005 / 2006 (Vision)</u>	<u>2006 / 2007 (Vision)</u>	<u>2005 / 2006 (Hearing)</u>	<u>2006 / 2007 (Hearing)</u>
Preschool aged children screened	1239	1269	1364	1059
Special education students	305	229	175	157
School age	6598	6060	4294	4213
Total	8142	7558	5833	5429

HEALTH SCREENING

The Health Screening program functions to investigate diseases, thereby helping to promote and protect the health of the community. A communicable disease is any illness or condition that can spread to one or more persons.

<u>CLIENTALE</u>	<u>2006</u>	<u>2007</u>
Clients tested for Sexually Transmitted Diseases (STD)	632	497
Clients tested for Human Immunodeficiency Virus (HIV)	466	300

EMERGENCY PREPAREDNESS & MANAGEMENT DIVISION



Melissa Maillette (Manager/EPC), Wendy Donnelly (Division Clerk), Dominic Smith (Health Educator), Chris Izworski (Emergency Management Coordinator)

The Bay County Health Department Emergency Preparedness & Management Division (EP&MD) had a very active 2007. A new Emergency Management Coordinator was hired and has been doing a wonderful job. Planning for a full-scale, train derailment exercise began towards the end of 2007 with the exercise scheduled to take place September, 2008.

The EP&MD conducted quarterly high tests of the Michigan Health Alert Network (MIHAN) with an average of 100% of personnel confirming all alerts. Seventeen employees and two Deputy Medical Examiners were fit-tested for particulate and full-face respirators. Six command and management staff members were trained in the FEMA IS 300 course as required by federal mandates and twelve staff members attended a Unified Incident Command course. The EP&MD staff participated in monthly 800 MHz radio drills with both the Region 3 Bioterrorism Defense Network and the Michigan Department of Community Health, Office of Public Health Preparedness.

In February, the BCHD held their first all day staff in-service training day so all staff could receive the necessary and required annual training. The trainings included blood borne pathogens, HIPAA, panic button policy, TB and respiratory protection and a review of several Health Department and County policies/procedures. In addition, staff received training on Emergency Preparedness topics, including: the Strategic National Stockpile (SNS), overview of Public Health Emergency Preparedness and County Emergency Management divisions, the Modular Emergency Medical System (MEMS), the BCHD Incident Command Center activation and call-down procedures, and radio review training.

COMMUNITY OUTREACH/EDUCATION

Several outreach and community collaborations took place during 2007. Staff attended other local health departments' drills/exercises within Region 3 and participated in health fairs and community events in Bay County. The Community Health Educator provided Pandemic Influenza, blood borne pathogens, general emergency preparedness, and general hygiene/hand washing presentations to staff, community groups, and schools. In addition, the Health Director and EP&MD staff, in collaboration with Bay Regional Medical Center and the Bay County Medical Control Authority, held the "Modular Emergency Medical System for Clinicians" seminar to inform Bay County medical professionals about MEMS and their role during an emergency event if MEMS were activated. Additionally, the Bay County Incident Command Trailer and its components, was utilized for the first time as a mobile vaccination clinic, when the BCHD participated in Delta College's Health and Wellness Fair and provided vaccinations to interested attendees. BCHD clerks, nurses, student nurses, and EP&MD staff assisted in the mobile vaccination clinic. This clinic was also utilized as a mass prophylaxis drill to test through-put of patients and the effectiveness of the trailer to be used for this purpose. It was a success and we hope to do it again in 2008.



Immunization staff, Shirley Gould, Joette Phelps, and April Mathis assist clients with paperwork before receiving their immunizations.



Marilyn Laurus, BCHD Maternal & Child Health Services Manager, along with Cathy Sujkowski, RN, of the Division on Aging, are waiting patiently in the Incident Command Trailer to give immunizations.



Immunizations were administered in Bay County's Incident Command Trailer.

BAY HEALTH PLAN



The Bay Health Plan is a low cost, community-sponsored program that provides basic healthcare coverage to low-income individuals in Bay County. The plan provides limited coverage for doctor visits, prescriptions, lab tests and X-rays with affordable co pay amounts. This is not insurance, however, the coverage for many basic healthcare services has assisted many Bay County residents with their healthcare needs. Eligible residents must be between the ages of 19-64 and do not qualify for any other governmental insurance program.

Bay Health Plan Data (Total Number of Enrollees)

2005		2006		2007	
Plan A; 575	Plan B; 1555	Plan A; 575	Plan B; 1420	Plan A; 274	Plan B; 559

* **Plan A** is the Adult Benefit Waiver Program through Michigan Department of Community Health.

* **Plan B** is for Bay County residents who have no health insurance, are U.S. citizens and meet income requirements.

**MICHIGAN DISEASE SURVEILLANCE SYSTEM (MDSS)
2007 Reportable Communicable Disease Statistics**

DISEASE	2005	2006	2007
FOODBORNE DISEASE GROUP			
Campylobacter	7	5	5
Giardiasis	9	6	13
Listeriosis	-0-	1	-0-
Salmonellosis	5	5	9
MENINGITIS DISEASE GROUP			
Aseptic Meningitis	10	11	16
Bacterial Meningitis	2	3	-0-
OTHER DISEASE GROUP			
Animal Bite	6	28	65
Botulism – Infant	-0-	1	-0-
Coccidioidomycosis	1	1	-0-
Cryptococcosis	1	1	-0-
Guillain-Barre Syndrome	-0-	1	1
Legionellosis	1	2	2
Streptococcal Dis. Inv. Group A	-0-	1	1
STD DISEASE GROUP			
Chlamydia	163	211	213
Gonorrhea	44	23	39
Syphilis	1	1	3
VACCINE PREVENTABLE DISEASE GROUP			
Varicella	8	29	11
Mumps	-0-	8	-0-
Pertussis	4	12	2
VIRAL HEPATITIS			
Hepatitis B (Acute)	2	1	-0-
Hepatitis B (Chronic)	6	4	5
Hepatitis C (Acute)	8	2	-0-
Hepatitis C (Chronic)	24	60	25

Physicians, clinical laboratories, primary and secondary schools, childcare centers, and camps are required to report the occurrence, or suspected occurrence, of any disease, condition or infection as identified in the Michigan Communicable Disease Rules. In addition, all other health care providers are authorized to report to the local public health authorities. Together, they play a key role in state and local efforts to control communicable diseases. The public health system depends upon these reports of diseases to monitor the health of the community, and to provide the basis for preventive action.

CHILDREN SPECIAL HEALTH CARE SERVICES

Children Special Health Care Services (CSHCS) provides medical specialty care and assistance to eligible children and some adults within Bay County, who have chronic, physically disabling conditions.



*Judy McGee, CSHCS Representative
Laura Weiler, CSHCS Nurse*

CLIENTALE	2006	2007
Number of Families Served	258	266
Level I Plan of Care	NA	66
Level II Care Coordination	NA	18 units / 9 families
Case Management Services	NA	43 visits / 26 clients

**** In October 2006, the Children Special Health Care Services division expanded its program services to include Level I Plan of Care, Level II Care Coordination, and Case Management Services.**

EARLY & PERIODIC SCREENING DIAGNOSTIC, and TREATMENT (EPSDT) / LEAD PROGRAM*

The EPSDT/Lead Program, which began in October, 2006, provides early detection of developmental delays before school age. In conjunction with periodic screening, this nurse tested children for lead, administered immunizations, and made referrals to Early On, MIHP, Successful Futures, WIC, and area physicians. For children whose Blood Lead Levels (BLL) were at or above 10 micrograms per deciliter of blood, the nurse referred those children to their physicians for a confirmatory lead test. For those whose confirmatory tests resulted in same or higher levels, those families were contacted with follow-up lead information. For those children whose BLL exceeded 20 micrograms per deciliter, a home visit was made with a nurse and the Elevated Blood Lead (EBL) Investigator/Risk Assessor.

<u>CLIENTALE</u>	<u>2006</u>	<u>2007</u>
Number of EPSDT clients	22	81
Number of Lead Tests performed by Lead Nurse	21	188
Number of Lead Tests performed by WIC technicians/laboratory	126 (May – Dec.)	362
Number of home visits due to Blood Lead Levels exceeding 20 micrograms per deciliter	4	13
Number of families contacted due to Blood Lead Levels exceeding 10 micrograms per deciliter	15	15

*Funding for this program was made possible through a Parents Involved as Educators (PIE) Grant received through the Bay City Public Schools.

MATERNAL INFANT HEALTH PROGRAM (MIHP)

The Maternal Infant Health Program provides support to pregnant women and families with infants from pregnancy until the child is three years old.

<u>CLIENTALE</u>	<u>2005</u>	<u>2006</u>	<u>2007</u>
Number of Individuals Served (Maternal)	179	204	165
Number of Individuals Served (Infant)	97	121	109
Number of Maternal Screenings	N/A	174 (Began screening in April, 2006)	203

2006 Natality Trends for Bay County

Total Births: 1,251

Teen: 9.6%

Low Birth Weight: 7.0%

Very Low Birth Weight: 1.4%

Preterm: 8.3%

First Birth: 39.3%

Less Than 12th Grade Education: 15.7%

Smoke While Pregnant: 20.2%

Unmarried: 40.8%

Infant Death Rate:

White: 9.1

Black: 0



SUCCESSFUL FUTURES PROGRAM



Successful Futures is a free program offered to all pregnant women and parents with children ages birth to six in Bay County. The program is staffed by a social worker and nurse who conduct home visits, screenings, referrals, and distribute parenting newsletters.

Stephanie Blaylock, Social Worker & Brenda Holmes, RN

<u>SERVICES</u>	<u>FISCAL YEAR 2005-2006</u>	<u>FISCAL YEAR 2006-2007</u>
Home Visits / Family Assessments	1198	1231
Information / Referral Contacts	1241	1093
Screenings from the hospital	754	496
Training to OB service providers	8	15

MEDICAL EXAMINER

Bay County's Medical Examiner detects the cause and manner of sudden and expected, accidental, violent and suspicious deaths in Bay County. Dr. Hurt provides a very important service that helps us better understand how deaths in our community happen. This allows us to plan efforts to prevent early deaths and improve the health of our community.

Autopsied Deaths 2007 Dr. Howard Hurt, Medical Examiner / Interim Director								
Sex		Ages						
Females	23	0-10 yrs.	1	31-40 yrs.	8	61-70 yrs.	12	
Males	53	11-20 yrs.	4	41-50 yrs.	15	71-80 yrs.	6	
		21-30 yrs.	3	51-60 yrs.	27			
Total	76							
Manner of Death		Cause						
Natural	33	Cardiovascular	25		Drugs	10		
Accident	22	Cancer	0		Gunshot	5		
Suicide	7	Blunt Force	11		Cirrhosis	3		
Homicide	3	Stabbing	2		Drowning	3		
Indeterminate	11	Hanging	1		Positional Asphyxia	2		
		COPD (Pulmonary)	3		Miscellaneous	9		
Blunt Force								
Multiple Vehicle	3							
Single Vehicle	6							
		Snowmobile						1
		Motorcycle						1
		Auto						4
Drugs Involved								
Alcohol	12							
Cocaine	8							
Morphine	4							
Propofol	2							
Propoxyphene	2							



DIVISION ON AGING (DOA)
Services Provided Fiscal Year October 1, 2006 – September 30, 2007

Rebecca Reimann, Division on Aging Director

Bay County Division on Aging is dedicated to providing continued opportunities for the community's older adults by maintaining independence, offering social opportunities, and enhancing their lives through quality services in a cost-effective manner. In addition to the listed programs, the following programs are provided to Bay County senior citizens, financed by the Bay County Senior Millage and clients fees;

* Local Millage Programs include: Wonderful Times newsletter, Volunteer program, Handyman service, special events, Senior Olympics, Information and Referral

** Other Grant Programs include: Caregiver Education, Respite Care, Exercise Program

MEAL SERVICES

<u>Program</u>	<u>Total Clients</u>	<u>Contract</u>	<u>Waiver Meals</u>	<u>NSIP & Millage</u>	<u>Total Meals</u>
Congregate Nutrition	426	46,972	-0-	2,125	49,097
Home Delivered Meals	941	130,887	16,958	-0-	147,845

SUPPORT SERVICES – HOURS

<u>Program</u>	<u>Total Clients</u>	<u>Contract</u>	<u>Waiver</u>	<u>Tobacco Settlement</u>	<u>Senior Millage</u>	<u>Total Hours</u>
Case Coordination and Support	1,194.00	6,221.50	-0-	-0-	-0-	6,221.50
Caregiver Training	101.00	596.15	-0-	-0-	-0-	596.15
Exercise Program	55.00	802.50	-0-	-0-	-0-	802.50
Homemaking	281.00	10,036.24	229.00	-0-	-0-	10,265.24
Respite Care	26.00	1,694.00	127.00	686.00	-0-	2,507.00
Personal Care	112.00	1,415.01				

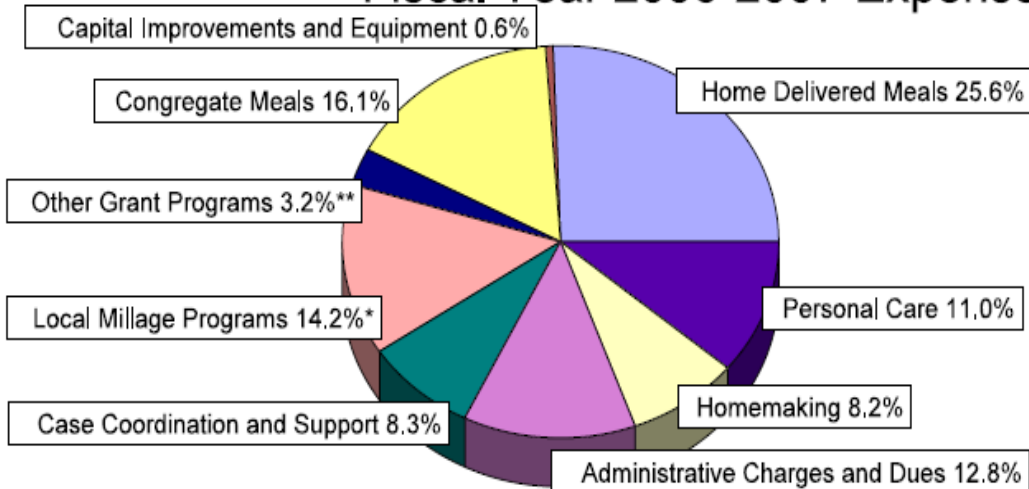
*Service units converted to hours

Fifty-nine individuals were approved to receive help to remain independent in their homes through pass-through funding provided by Region VII Area Agency on Aging.

NOTE: All statistics and dollar amounts are subject to final audit.



Fiscal Year 2006-2007 Expenses

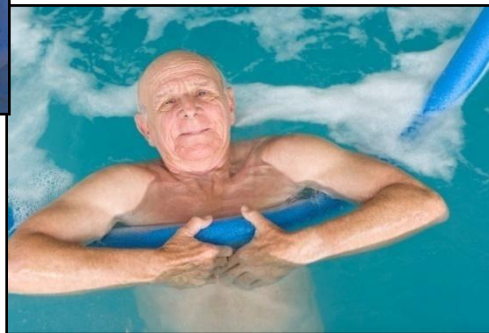


DIVISION ON AGING EXPENSES

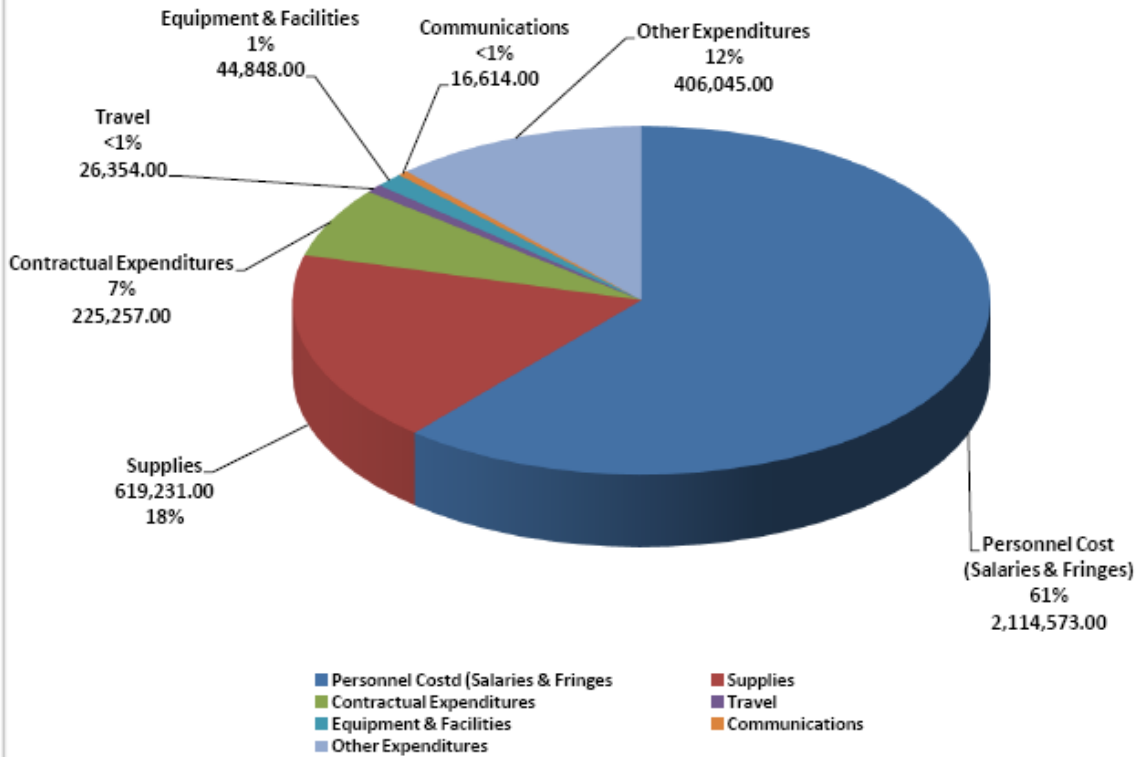
SOURCES OF INCOME

Source	Amount	Percentage
Senior Millage Fund	\$1,601,698	58.6
Grants	\$505,233	18.5
Client Contributions	\$292,517	10.7
NSIP***	\$108,455	4.0
Medicaid Waiver	\$93,652	3.4
Other Income/Rebates	\$78,957	3.0
Client Fees	\$35,866	1.3
Tobacco Settlement	\$8,464	0.3
General Fund	\$6,200	0.2
Total	\$2,731,042	100

*** Nutrition Services Incentive Program (formerly USDA)



**Bay County Health Department
Fiscal Year End 9/30/2007 Expenditures**

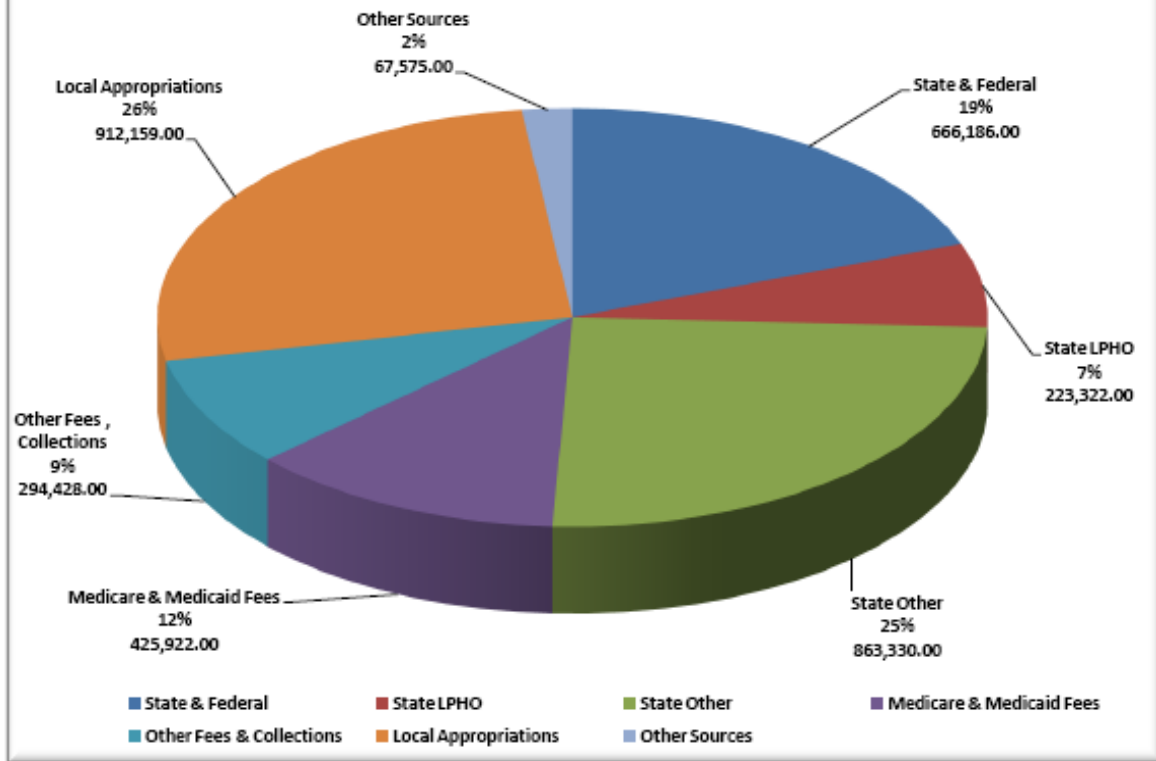


Expenditures:

**Total Health Department
FYE 9/30/07
Actual**

Personnel Costs (Salaries & Fringes)	<u>\$ 2,114,573</u>
Supplies	<u>\$ 619,231</u>
Contractual Expenditures	<u>\$ 225,257</u>
Travel	<u>\$ 26,354</u>
Cap Exp for Equip & Facilities	<u>\$ 44,848</u>
Communications	<u>\$ 16,614</u>
Other Expenditures	<u>\$ 406,045</u>
Total Expenditures	<u>\$ 3,452,922</u>

**Bay County Health Department
Fiscal Year end 9/30/2007 Revenues**



Revenues:

**Total Health Department
FYE 9/30/07
Actual**

State and Federal	\$ <u>666,186</u>
State Local Public Health Operations (LPHO)	\$ <u>223,322</u>
State Other	\$ <u>863,330</u>
Medicare and Medicaid Fees	\$ <u>425,922</u>
Other Fees and Collections	\$ <u>294,428</u>
Local Appropriations	\$ <u>912,159</u>
Other Sources	\$ <u>67,575</u>
Total Revenues	\$ <u>3,452,922</u>